

Read Me:

Model Name: DM-16_Flow_Past_Block_Model

Objective: Use EFDC+ Explorer (EE) and EFDC+ to simulate hydrodynamic of flow past a block with the goal of better understanding turbulence in EFDC.

Model Grid: 5,904 horizontal grid cells and 1 vertical layer.

EFDC+ Demonstration

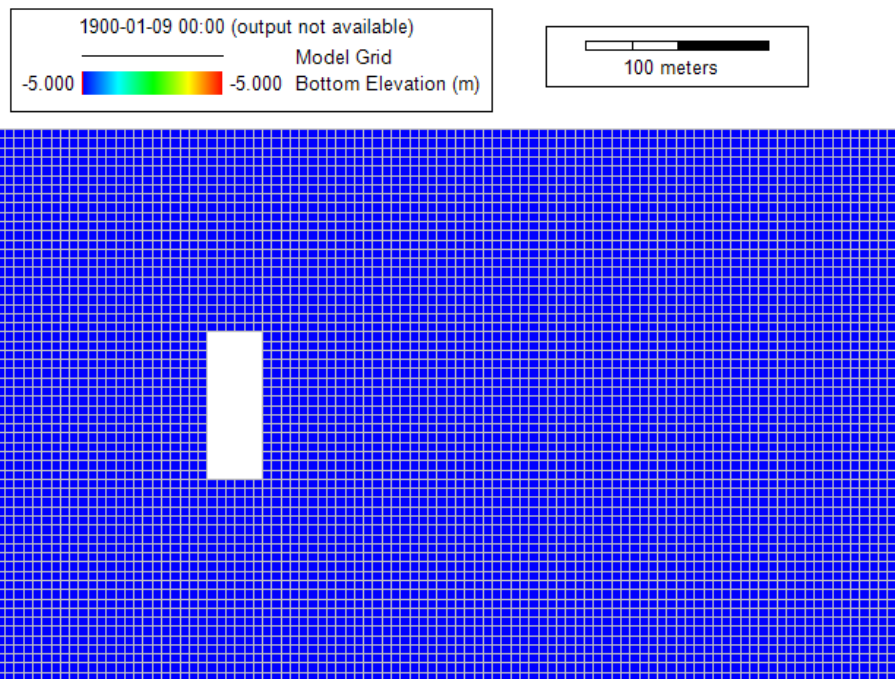


Figure 1 Model Domain of DM-16_Flow_Past_Block.

Folder Structure:

Model: EFDC model that can be loaded in EE to pre- and post-process.

Test_record file: This file is just a record file that informs which EFDC+ executable was used to run the model.

Modules Activated: Hydrodynamics, dye.

Description: This model is designed to demonstrate and help understand the impacts of turbulence on an EFDC+ model.

Disclaimer: The model is provided to our users to demonstrate that EFDC_Explorer and EFDC+ can be used to better understand how to build this kind of model. The model is running as expected; however, shouldn't be considered final as the model can be modified / refined to obtain improved results.

Files in Data Folder:

No data folder

Model Result:

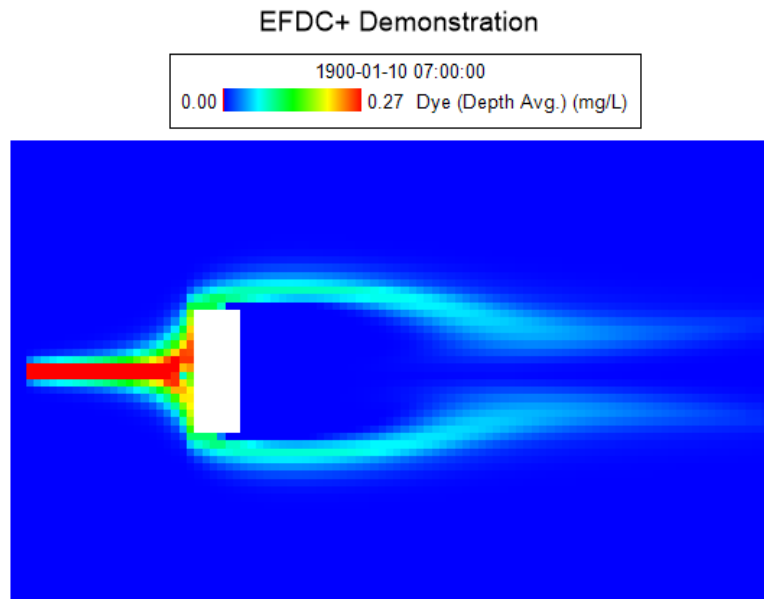


Figure 2 2DH view of dye from DM-16_Flow_Past_Block.